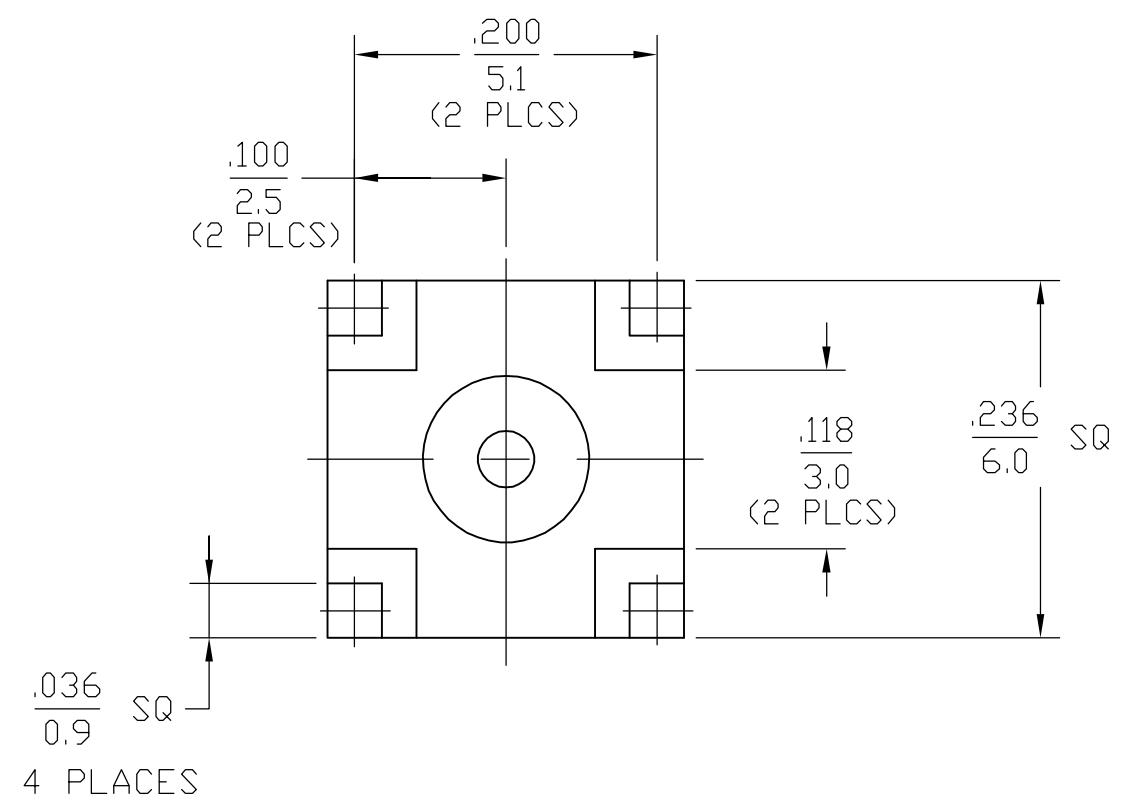
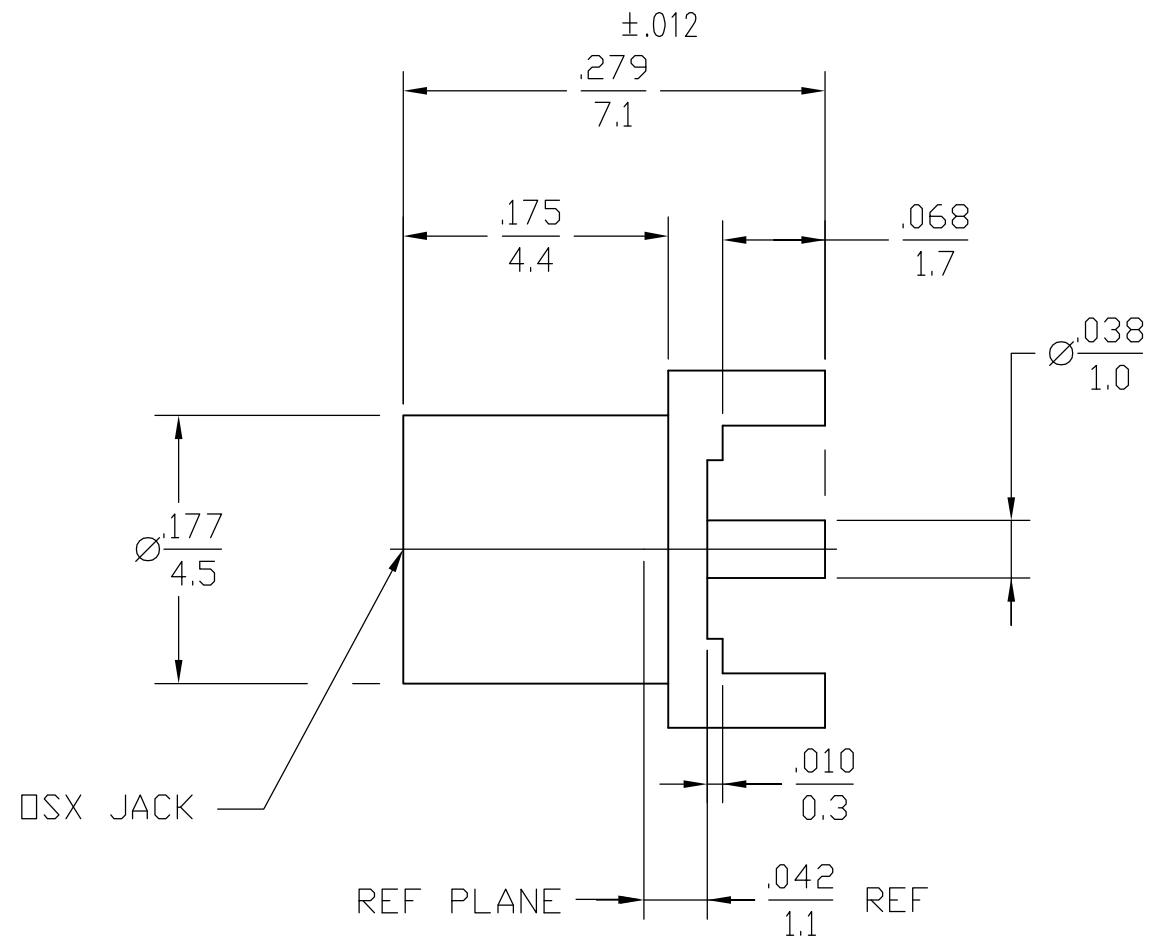


THIS DRAWING IS UNPUBLISHED. RELEASED FOR PUBLICATION  
 © COPYRIGHT BY TYCO ELECTRONICS CORPORATION. ALL RIGHTS RESERVED.

LOC	DIST	REVISIONS					
AJ	17	P	LTR	DESCRIPTION	DATE	DWN	APVD
			B	REVISED PER EC OS14-0018-05	03MAR05	BM	KW



OBSOLETE	1060995-2
	1060995-1
	PART NUMBER

ELECTRICAL	MECHANICAL	ENVIRONMENTAL
Nominal Impedance (Ohms) <u>50</u>	Force to Engage: (Lbs) <u>3.4 MAX</u>	Temperature Rating <u>-65°C TO +165°C</u>
Frequency Range (GHz) <u>DC TO 6.0</u>	Force to Disengage: (Lbs) <u>1.77 MIN - 4.5 MAX</u>	Vibration <u>MIL-STD-202, Method 204, Condition B</u>
Voltage Rating (VRMS MAX) <u>335 @ Sea level</u>	Center Contact Captivation: <u>Axial 4.5lbs @ 1 minute with .006" displacement</u>	Thermal shock <u>MIL-STD-202, Method 107, Condition B</u>
VSWR <u>N/A</u>		Moisture Resistance <u>MIL-STD-202, Method 106</u>
Insertion Loss <u>N/A</u>		Corrosion <u>MIL-STD-202, Method 101, Condition B, 48 Hrs</u>
Corona, 70,000 Ft (VRMS MIN) <u>250 D.W.V.</u>		
(VRMS MIN) <u>1000</u>		
Contact Resistance		
Center Contact (Milliohms MAX) <u>5.0</u>		
Outer Contact (Milliohms MAX) <u>1.0</u>		
RF High Potential (VRMS MIN @ 5 MHz) <u>670</u>		
I.R. (Megohms Min) <u>10,000</u>		

.XXX = in  
 XX.X = mm (REF)

COMPONENT	MATERIAL	FINISH
HOUSING	BRASS PER ASTM-B-16, HALF HARD	GOLD PLATE PER MIL-G-45204
DIELECTRIC	PTFE FLUOROCARBON PER ASTM-D-1457	N/A
CENTER CONTACT	BERYLLIUM COPPER PER ASTM-B-196 OR ASTM-B-197, ALLOY C17300, CONDITION H	GOLD PLATE PER MIL-G-45204

THIS DRAWING IS A CONTROLLED DOCUMENT.		DWN <u>KYLE LE</u> 1-07-98	<b>tyco Electronics</b> Tyco Electronics Corporation Harrisburg, Pa 17105-3608	
DIMENSIONS: mm		CHK -	NAME <u>OSX PRINTED WIRING BOARD JACK RECEPTACLE STRAIGHT TERMINAL</u>	
TOLERANCES UNLESS OTHERWISE SPECIFIED:		APVD -	PRODUCT SPEC -	
0 PLC ± -		PRODUCT SPEC -	APPLICATION SPEC -	
1 PLC ± -		APVD -	SIZE <u>A3</u> CAGE CODE <u>00779</u> DRAWING NO <u>C-1060995</u> RESTRICTED TO -	
2 PLC ± 0.13		PRODUCT SPEC -	SCALE <u>NTS</u> SHEET <u>1</u> OF <u>1</u> REV <u>B</u>	
3 PLC ± -		APPLICATION SPEC -		
4 PLC ± -		APPLICATION SPEC -		
ANGLES ± 1'		WEIGHT -		
FINISH -		CUSTOMER DRAWING		